

**Towards a Critical Regionalism:  
Six Points for an Architecture of  
Resistance**

By

Kenneth Frampton

# ISSUES ADDRESSED

How architecture should define the periphery in contrast to the hegemonic architecture unfolding the center.

-Besides universal civilization, architecture should not neglect regional (cultural identity) and respond to its site context.

# DESIGN PROPOSED

Embrace high technology at the same time develop own regions identity, using materials as approach, respond to climate, site typology & culture.

# THE 6 POINTS

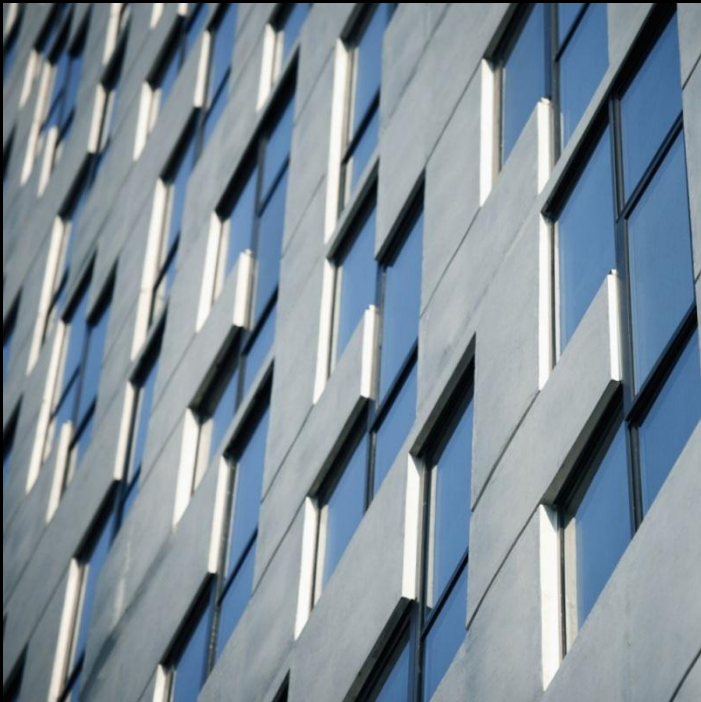
- 1) Culture & Civilization
- 2) The Rise & Fall of Avant-garde
- 3) Critical Regionalism & World Culture
- 4) Resistance of Place-form
- 5) Culture vs Nature: Typology, Context, Climate, Light & Tectonic Form.
- 6) The Visual vs Tactile

# CASE STUDY

Point 92

by

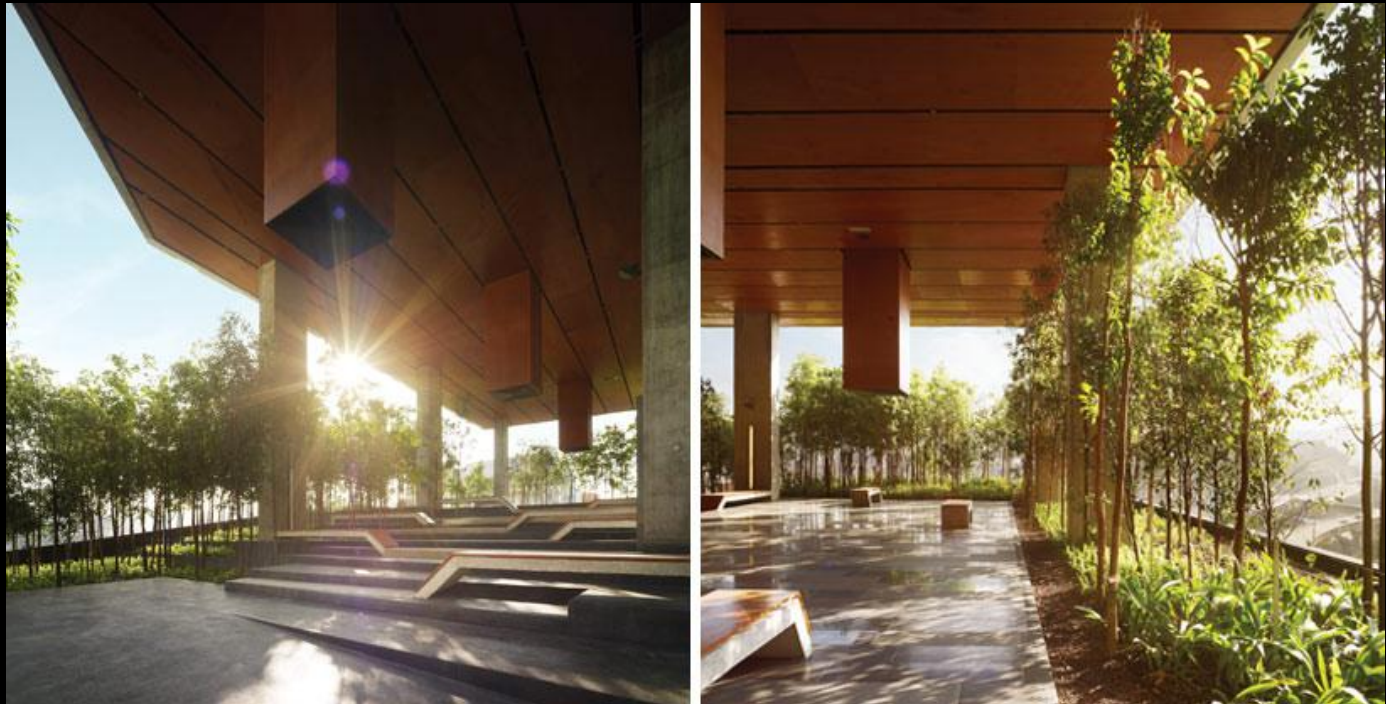
ZLG Design



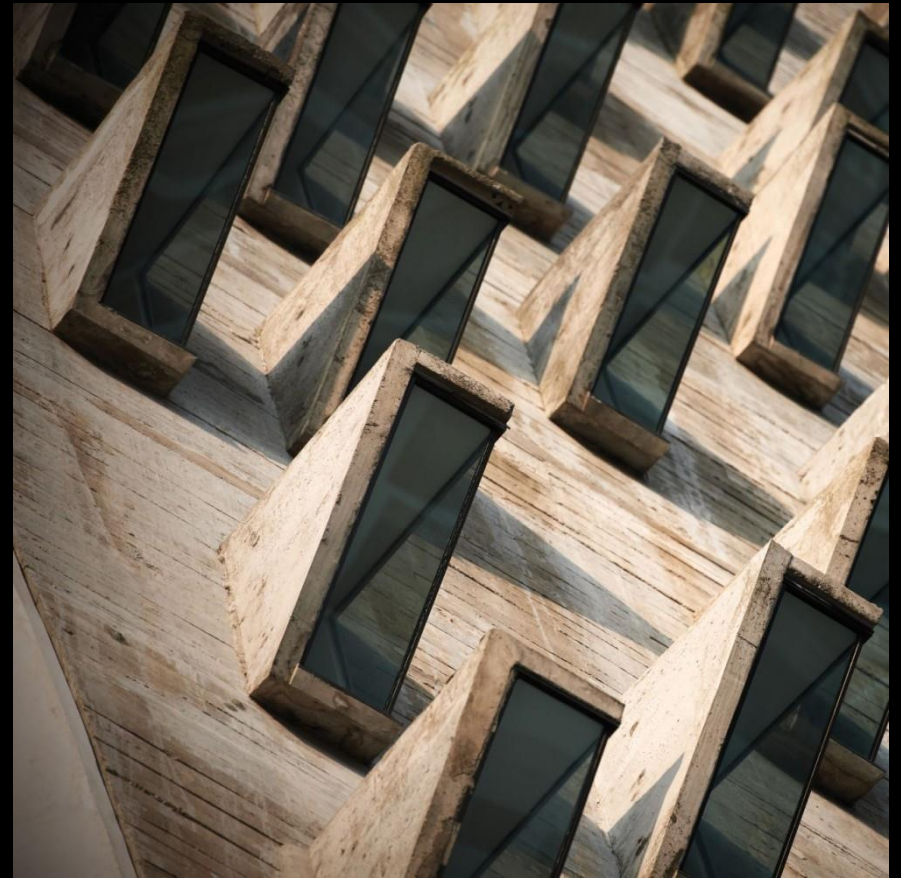
# Bring Nature Inside

## Sustainability (Tropical Context)

### Passive Design







Respond to Climate

Shading Device



Nature & Pleasing Material  
(Concrete & Timber)

Low Embodied Energy



THANK YOU